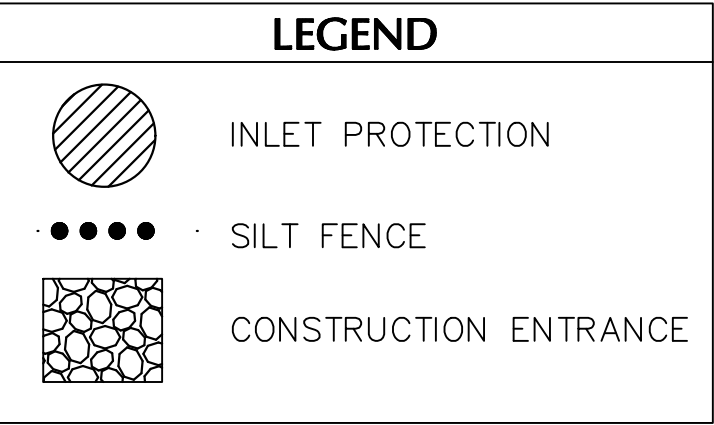
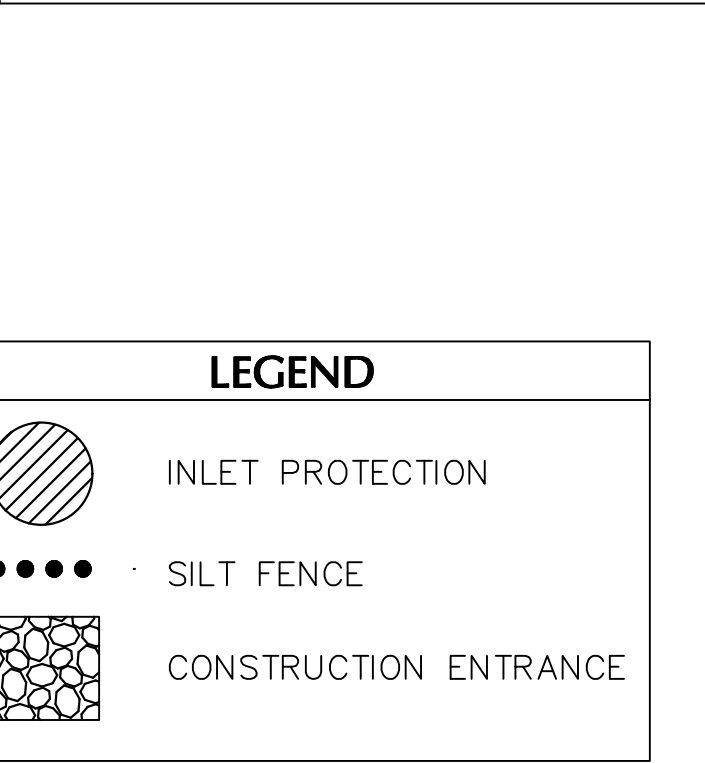
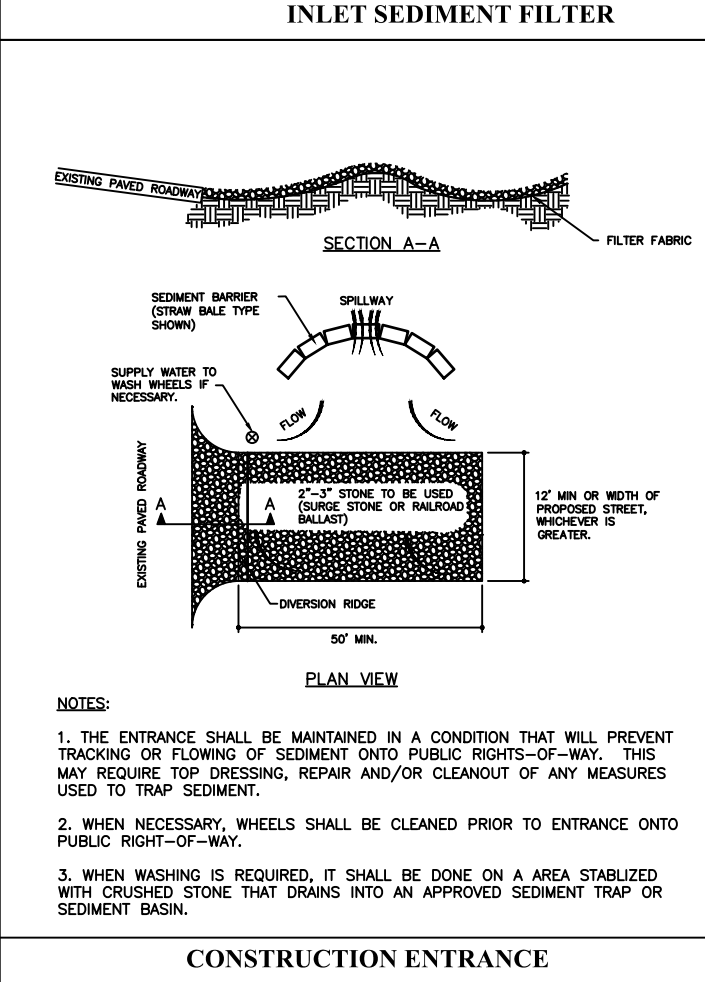
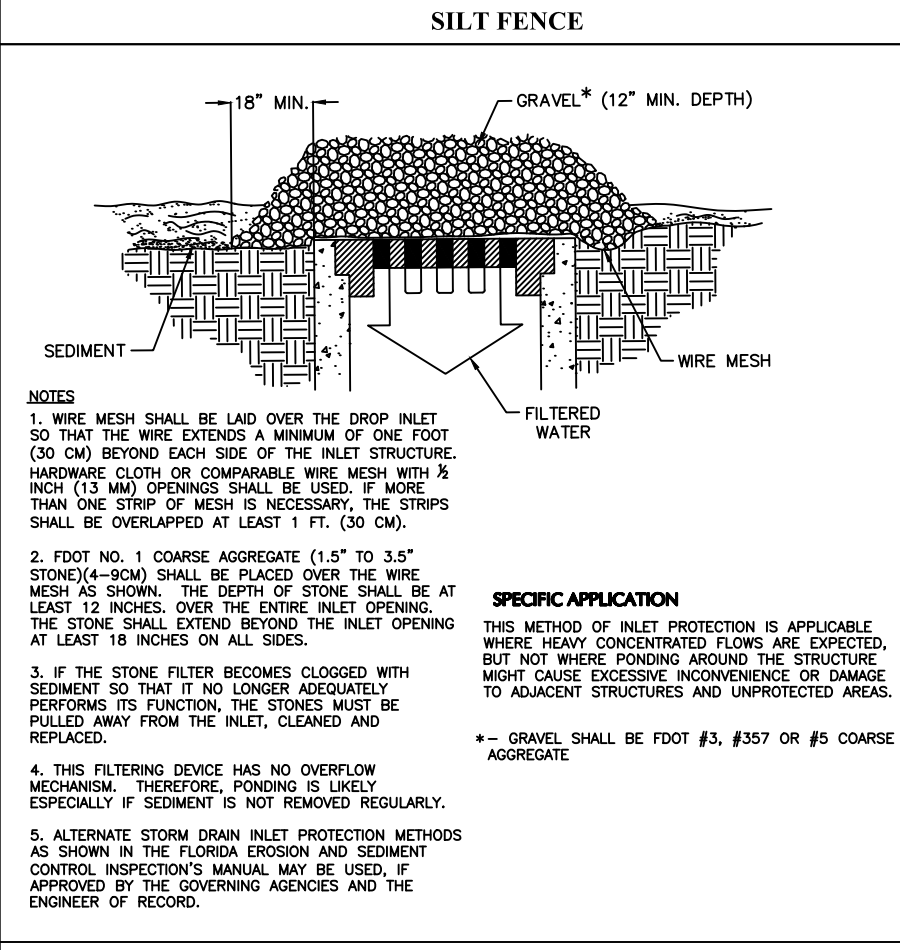
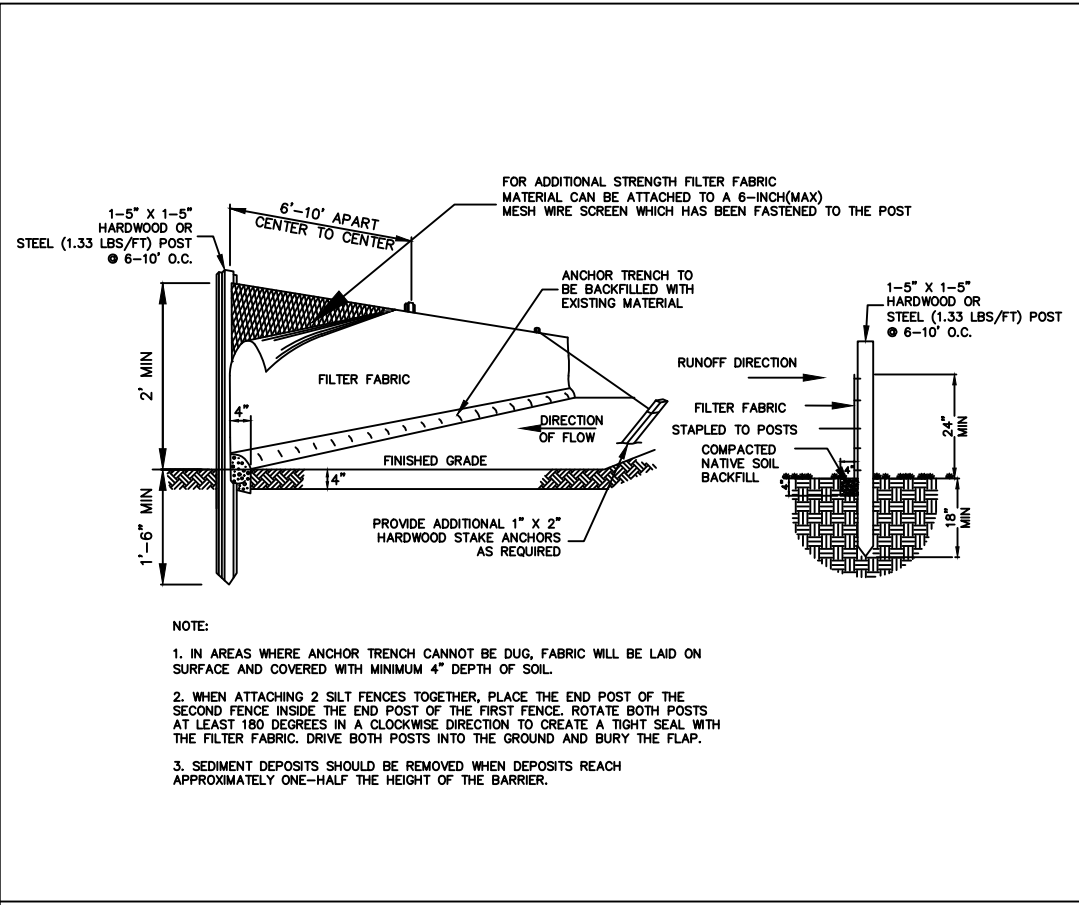
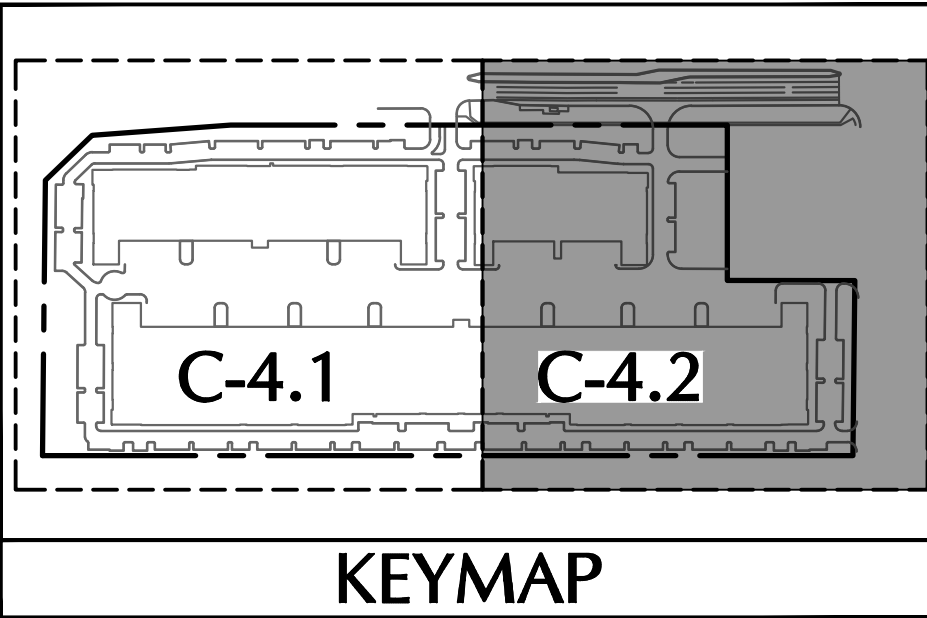
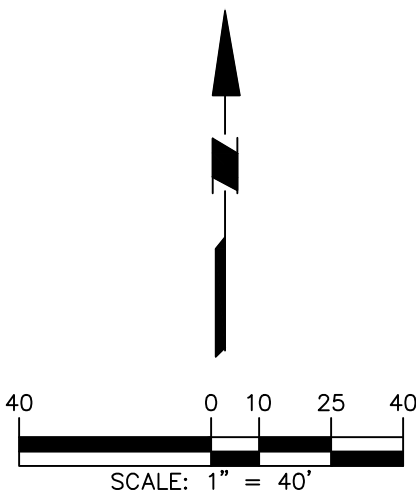
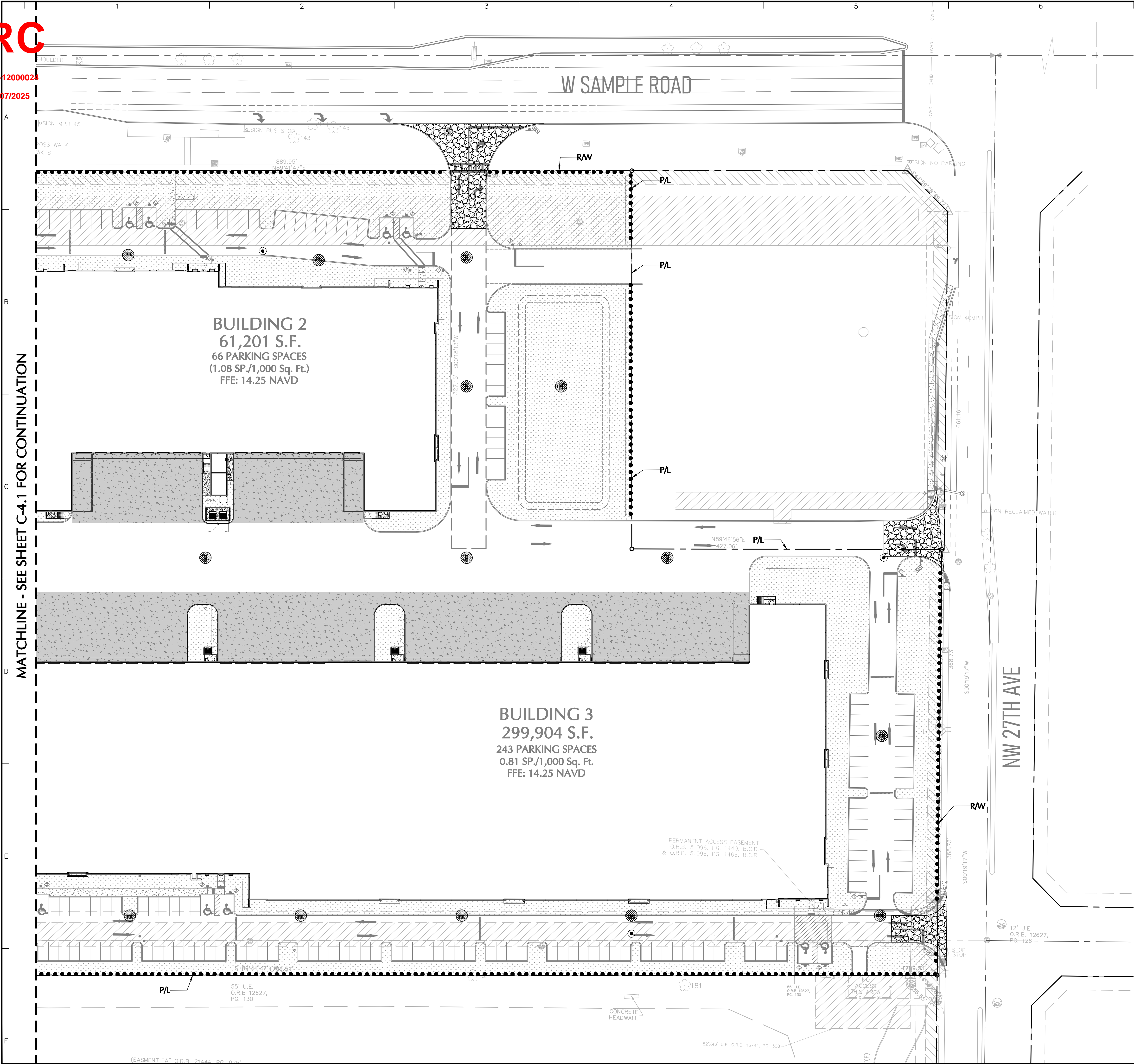


MATCHLINE - SEE SHEET C-4.1 FOR CONTINUATION



| Date | Description | No. |
|---|-------------|---|
| REVISIONS | | |
| This item has been digitally signed and sealed by Michael Carr, P.E. on the date adjacent to the seal. | | |
| Printed Copies of this document are not considered signed and sealed and the signature must be verified on any electronic copies. | | |
| MICHAEL P. CARR No. 72424 STATE OF FLORIDA PROFESSIONAL ENGINEER | | |
| SIGNATURE | | DATE SIGNED |
| MICHAEL CARR | | PROFESSIONAL ENGINEER FL Lic. No. 72424 |
| LANGAN | | |
| Langan Engineering and Environmental Services, LLC | | |
| 110 East Broward Boulevard, Suite 1500 Fort Lauderdale, FL 33301 | | |
| T: 954.320.2100 F: 954.320.2101 www.langan.com | | |
| FBPE Registry No. 00006601/LB8172/LB8198 | | |

| | | | |
|--------------------------------------|--|---------------|--|
| Project | | Drawing No. | |
| FESTIVAL INDUSTRIAL | | C-4.2 | |
| POMPAÑO BEACH | | FLORIDA | |
| BROWARD COUNTY | | Drawing Title | |
| SOIL EROSION & SEDIMENT CONTROL PLAN | | Project No. | |
| 330134201 | | Drawing No. | |
| Date | | FEBRUARY 2025 | |
| Drawn By | | EWM | |
| Checked By | | MPC | |